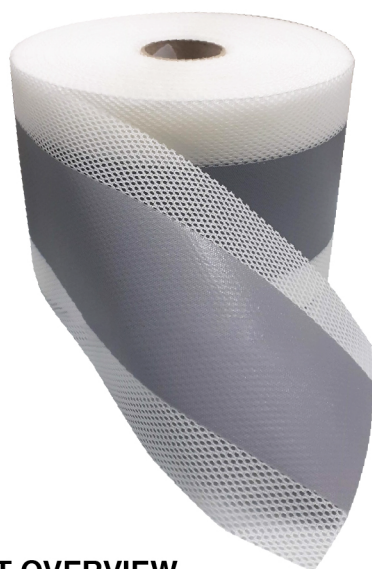




XEAL NET

Technical Datasheet



PRODUCT OVERVIEW

XEAL NET is a flexible, high-strength sealing and reinforcement tape made with durable polyester fabric. Designed for integration into waterproofing systems, adhesives, and sealants, XEAL NET enhances the performance and reliability of sealing applications. It is ideal for bridging cracks, reinforcing corners, and sealing joints, ensuring long-term protection in both indoor and outdoor environments.

APPLICATION AREAS

XEAL NET is suited for a wide range of waterproofing and sealing applications, including:

- ▶ Bathrooms, kitchens, and other wet rooms
- ▶ Balconies, terraces, and exterior walls
- ▶ Roof junctions and parapet details
- ▶ Expansion and movement joints
- ▶ Construction seams in floors and walls
- ▶ Waterproofing under tile, screed, or finishing layers
- ▶ Crack bridging in facades and substrates

KEY FEATURES

Reinforced Polyester: Offers excellent strength and stability

Highly Flexible: Conforms easily to complex surfaces and shapes

TECHNICAL SPECIFICATIONS

PROPERTIES	VALUE
Base Material	High-tenacity non-woven polyester
Type	Mesh or fleece reinforced
Standard Colors	White / Grey (custom available)
Roll Width Options	100 mm / 120 mm / 150 mm
Roll Length	25 m / 50 m
Approx. Thickness	~0.6 mm
Elongation at Break	≥ 35%
Tensile Strength	≥ 8 N/mm ²
Temperature Resistance	-30°C to +90°C

Effective Crack Bridging: Absorbs movements and structural shifts

Good Absorption: Seamlessly integrates with liquid membranes and sealants

Chemically Resistant: Resists common chemicals in construction

Wide Temperature Range: Stable from -30°C to +90°C

Rot and Mildew Resistant: Ideal for high-moisture areas

INSTALLATION GUIDELINES

Prepare Substrate: Clean, dry, and remove all contaminants from the surface.

Embed in Waterproofing Layer: Apply XEAL NET into a fresh coat of waterproofing compound. Press down using a roller or brush to remove air bubbles.

Reinforce With Overcoat: Apply a second layer of waterproofing over the tape for complete coverage

Overlap: Maintain at least 5 cm overlap at tape ends or junctions

Corners & Junctions: Use prefabricated corners or additional tape segments for complex shapes.

STORAGE & HANDLING

Store in a cool, dry environment protected from sunlight